

"Peak Oil Game"

Form groups of 4-5
people and find a
table!

Activity Focus:

What happens to production as the amount of oil in the ground decreases?

Game Goal

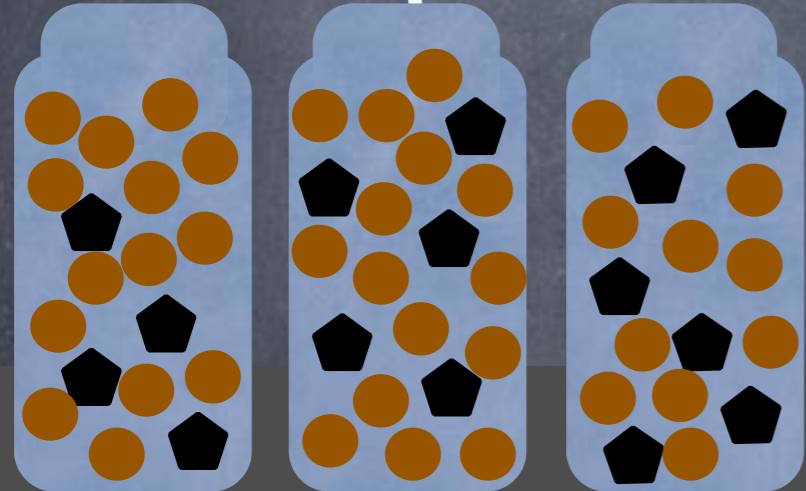
- Process the most clean oil by the end of the game.
 - Black beans = oil
 - Pinto beans = dirt and contaminants
 - Puzzle pieces & bouncy balls = immobile obstacles

How to mine the oil?

- You may mine from any jar in any order.
- All jars must remain on the table and upright at all times. They may not move from their spots.
- Puzzle pieces and bouncy balls must remain in the jars.
- Oil and dirt can only be touched by the tools provided. No hands!
- Oil and dirt can be taken out and dumped to the processing oil bag. Then only oil can be separated and put in refined oil bag.
- Oil must enter the processing bag before going to

driller

processor



driller

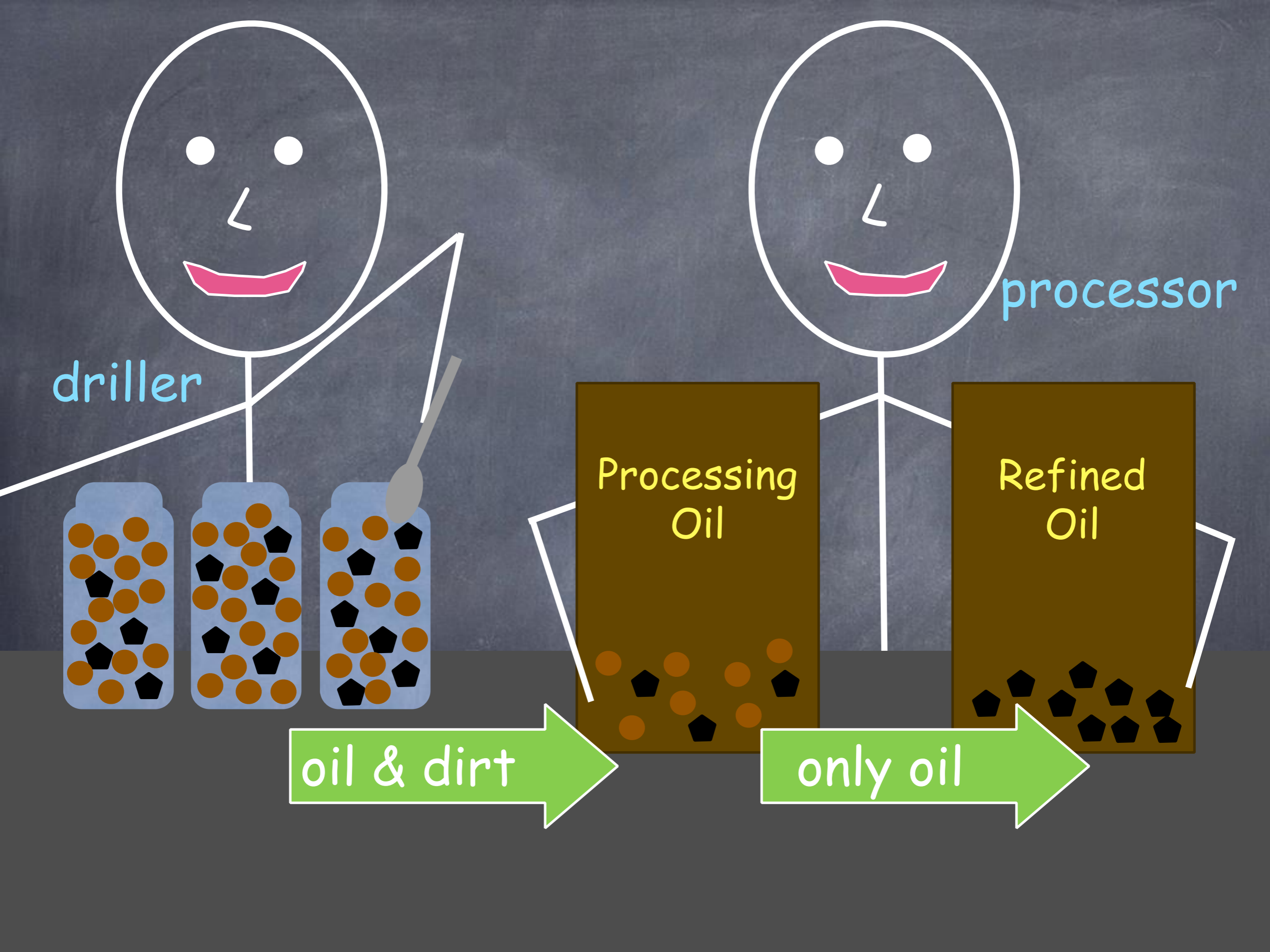
processor

Processing Oil

Refined Oil

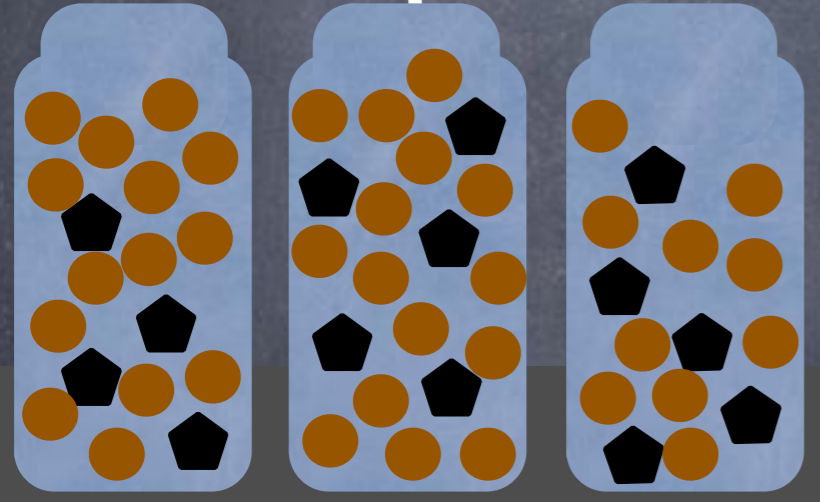
oil & dirt

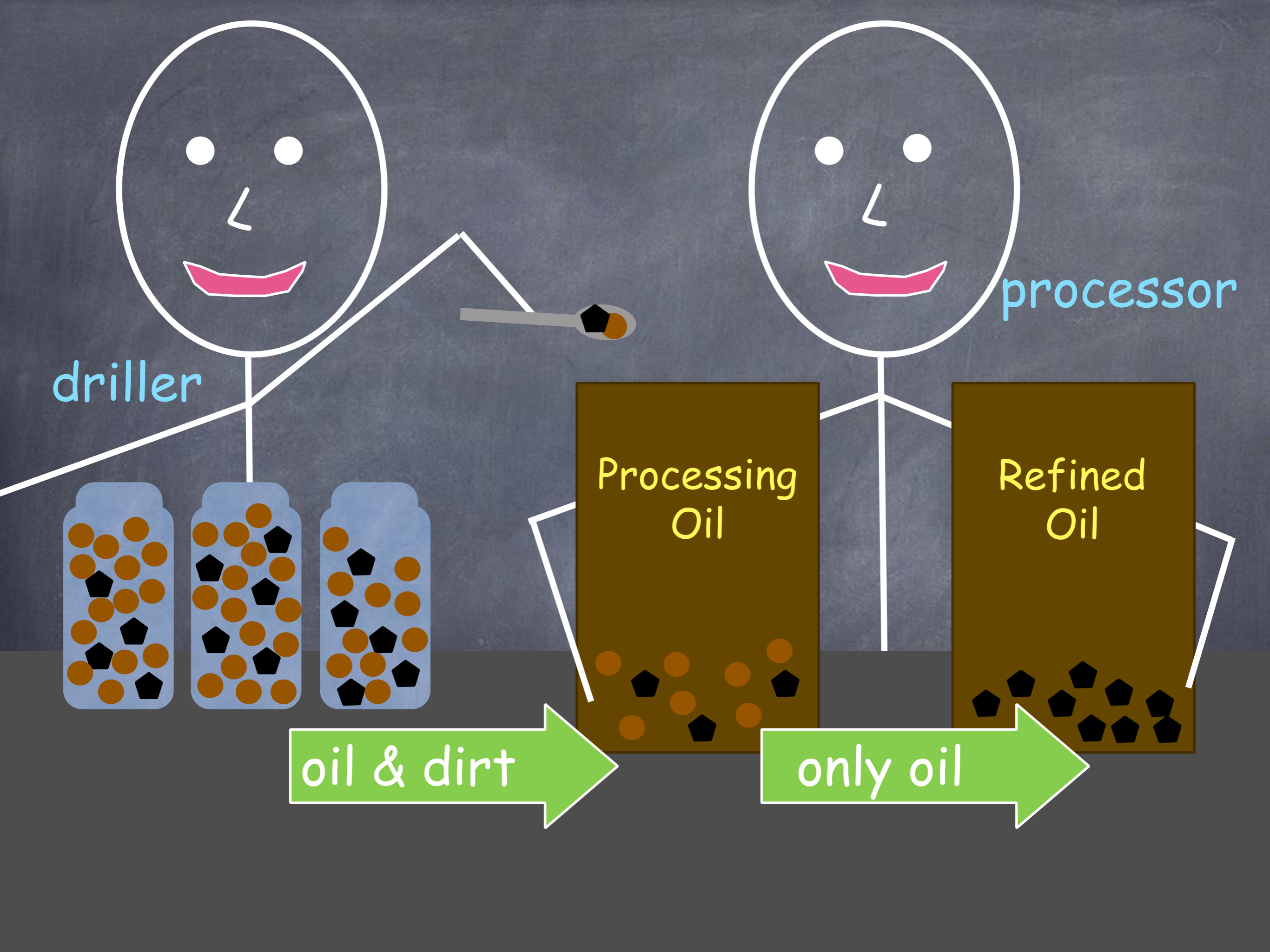
only oil

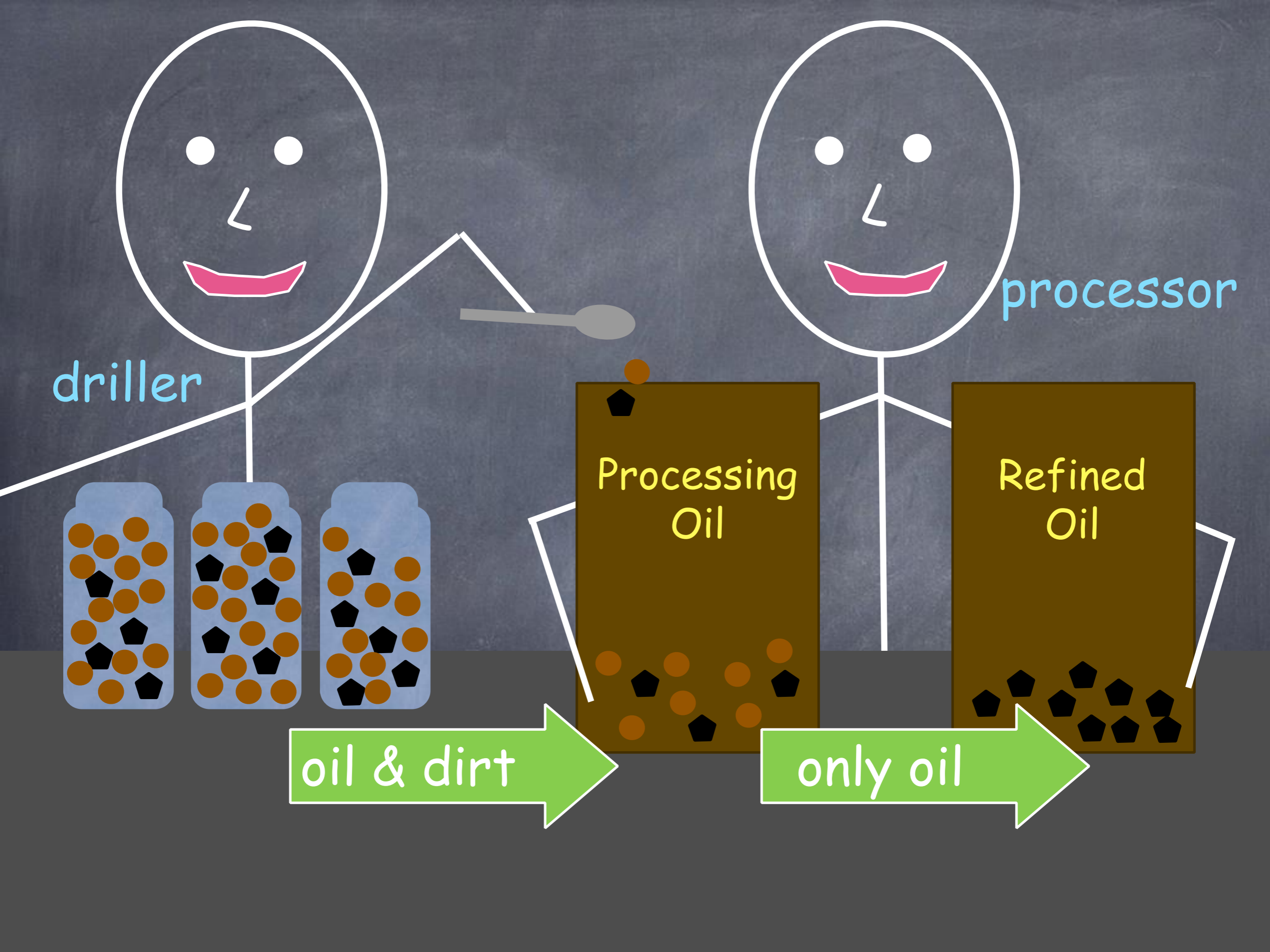


driller

processor







driller

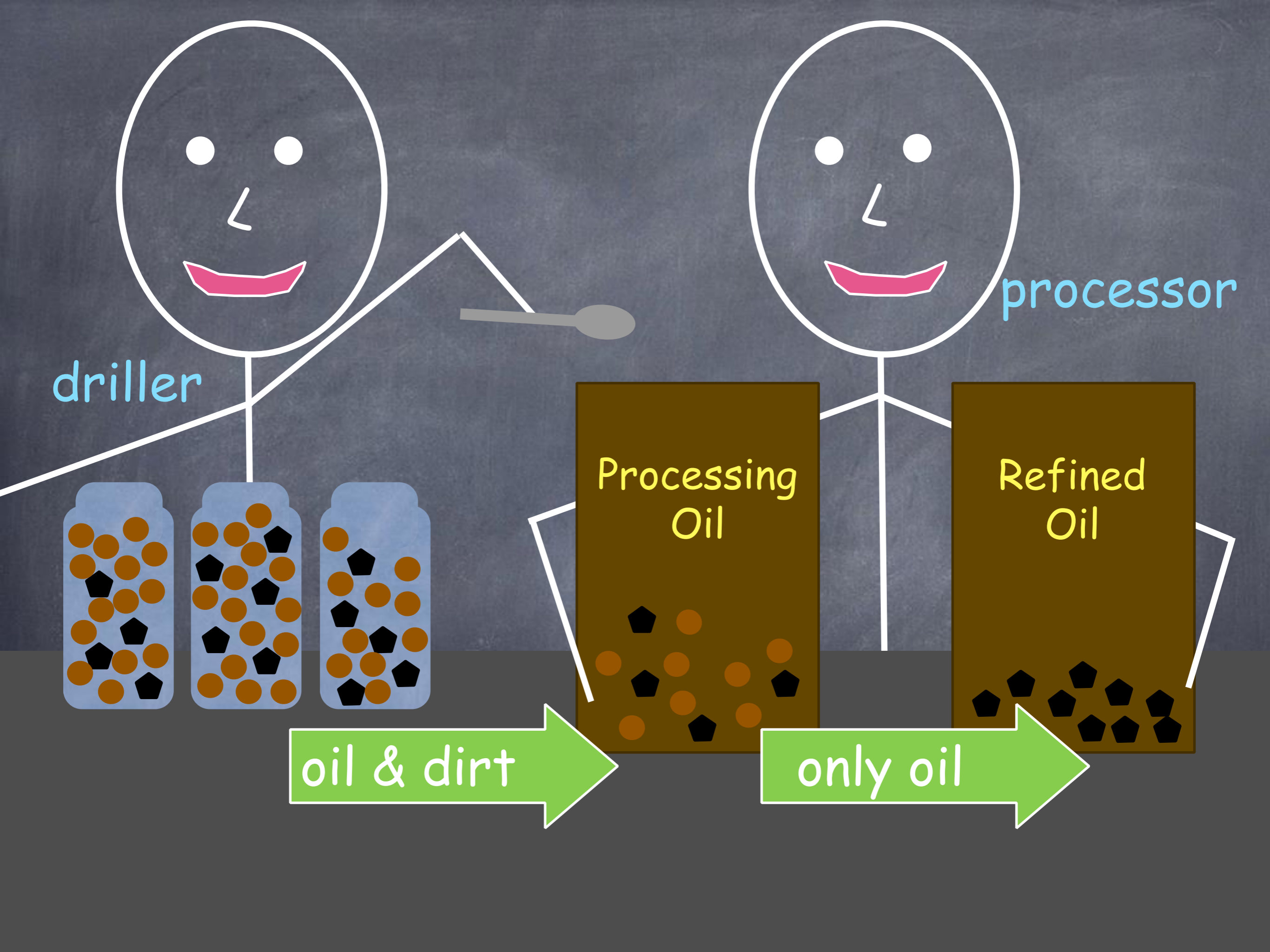
processor

Processing Oil

Refined Oil

oil & dirt

only oil



driller

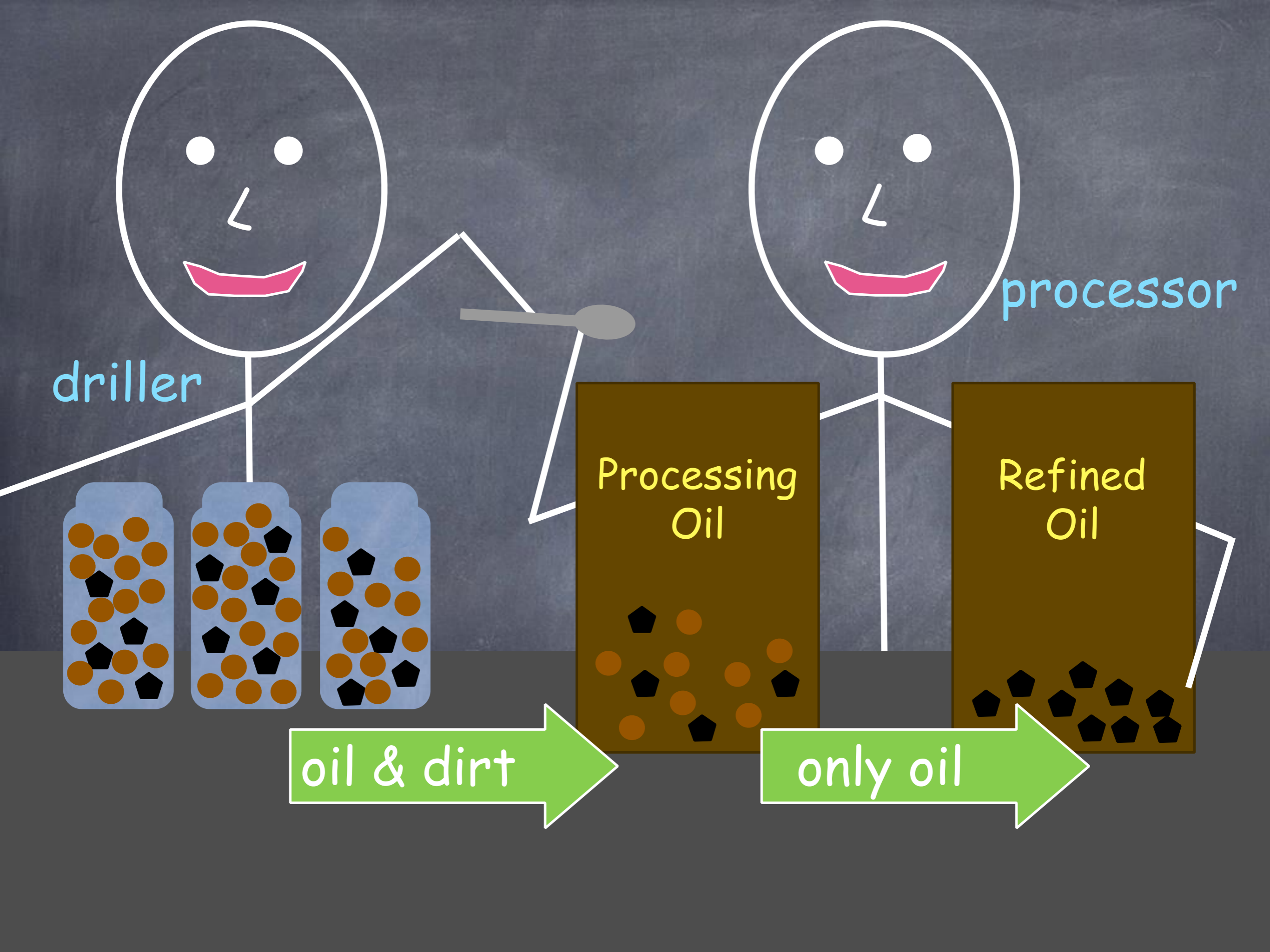
processor

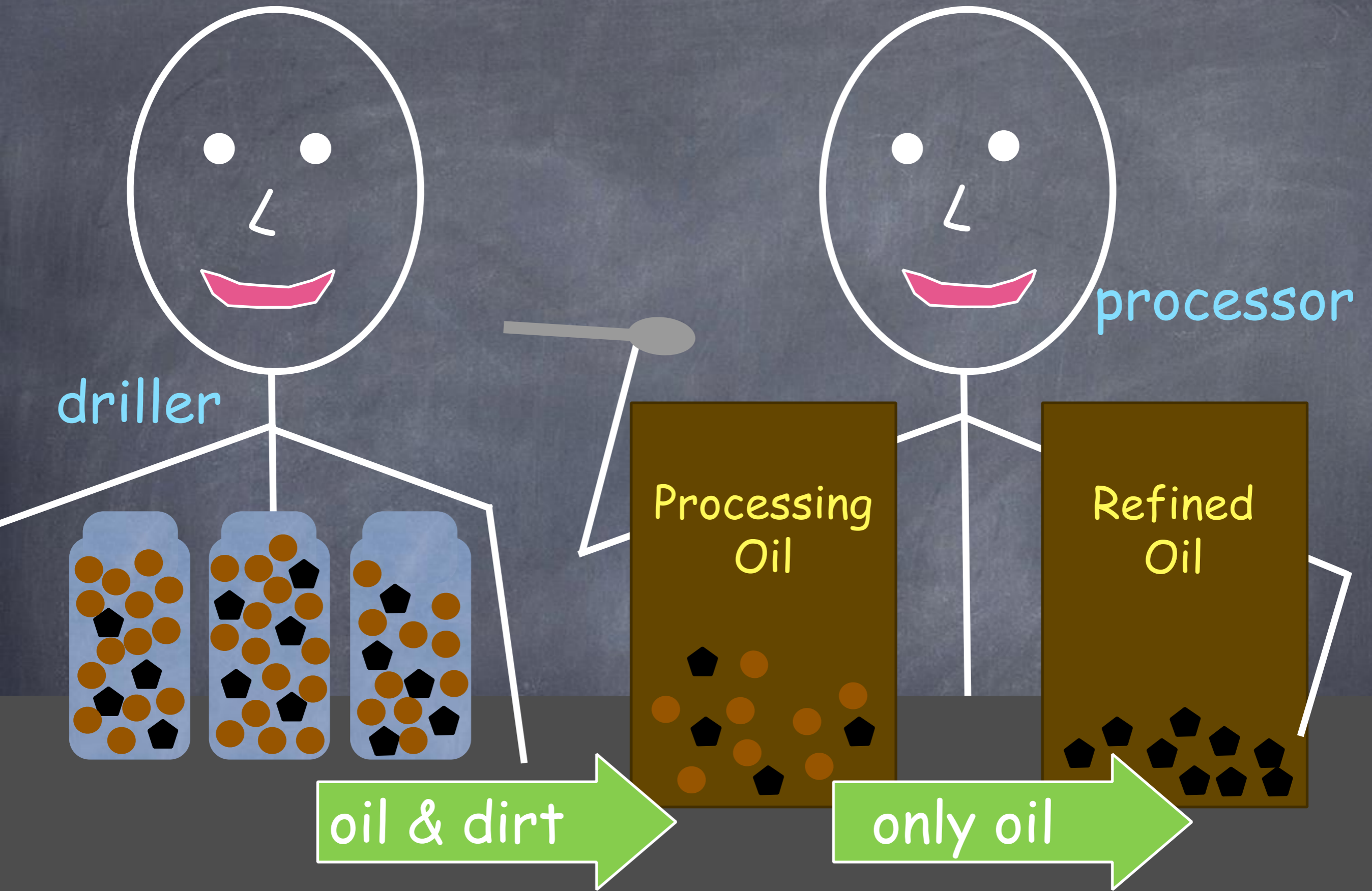
Processing Oil

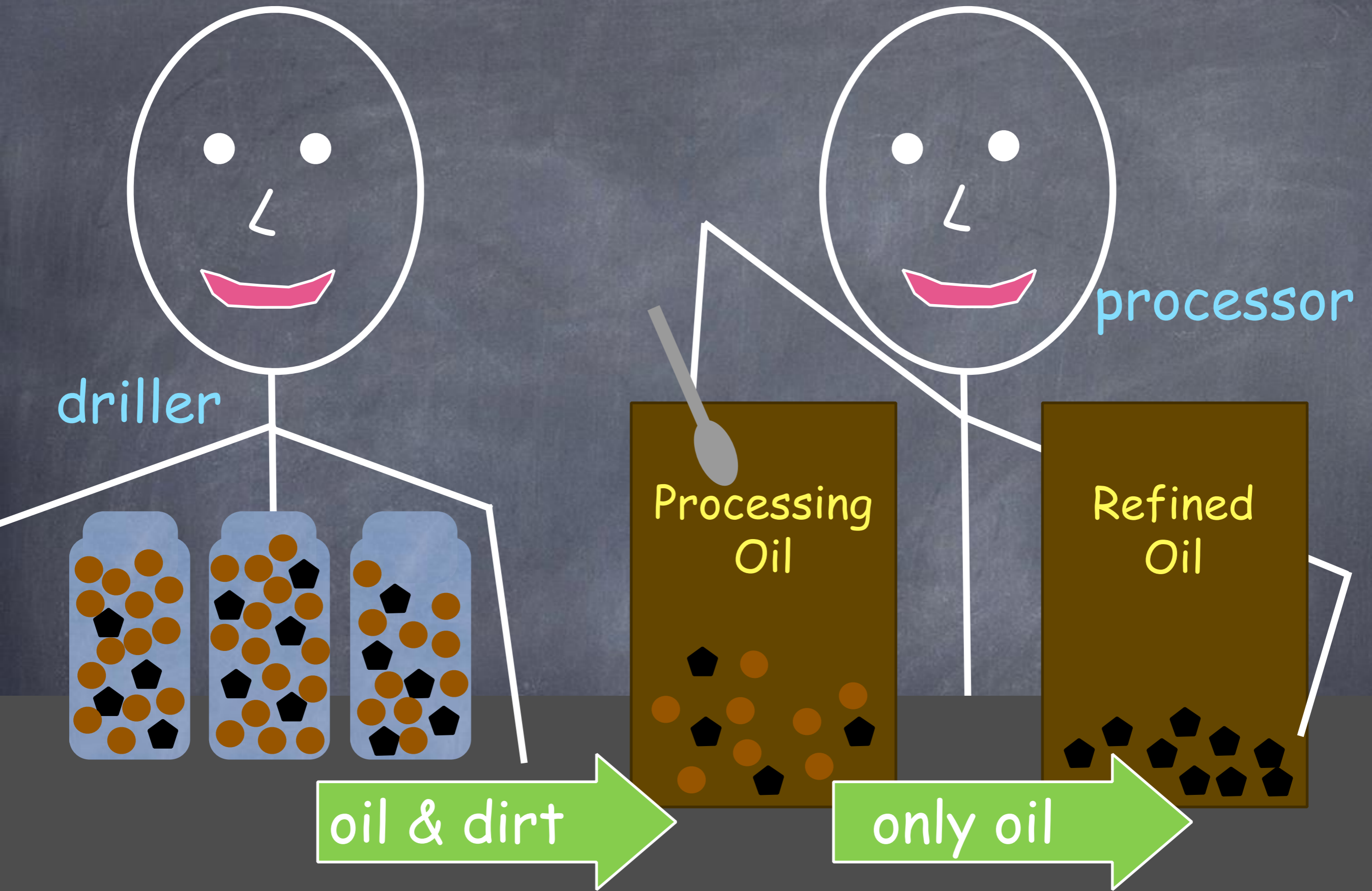
Refined Oil

oil & dirt

only oil







driller

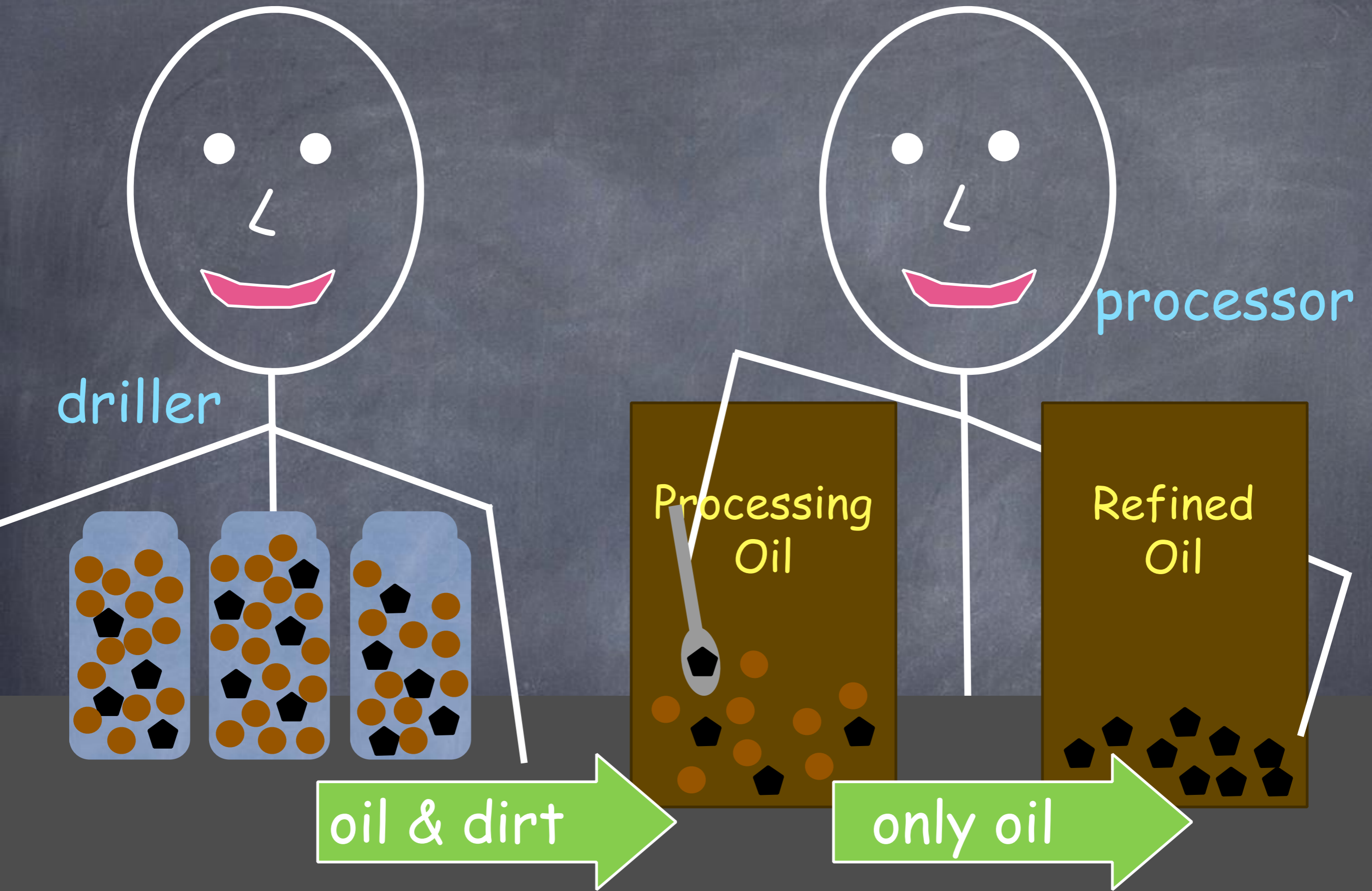
processor

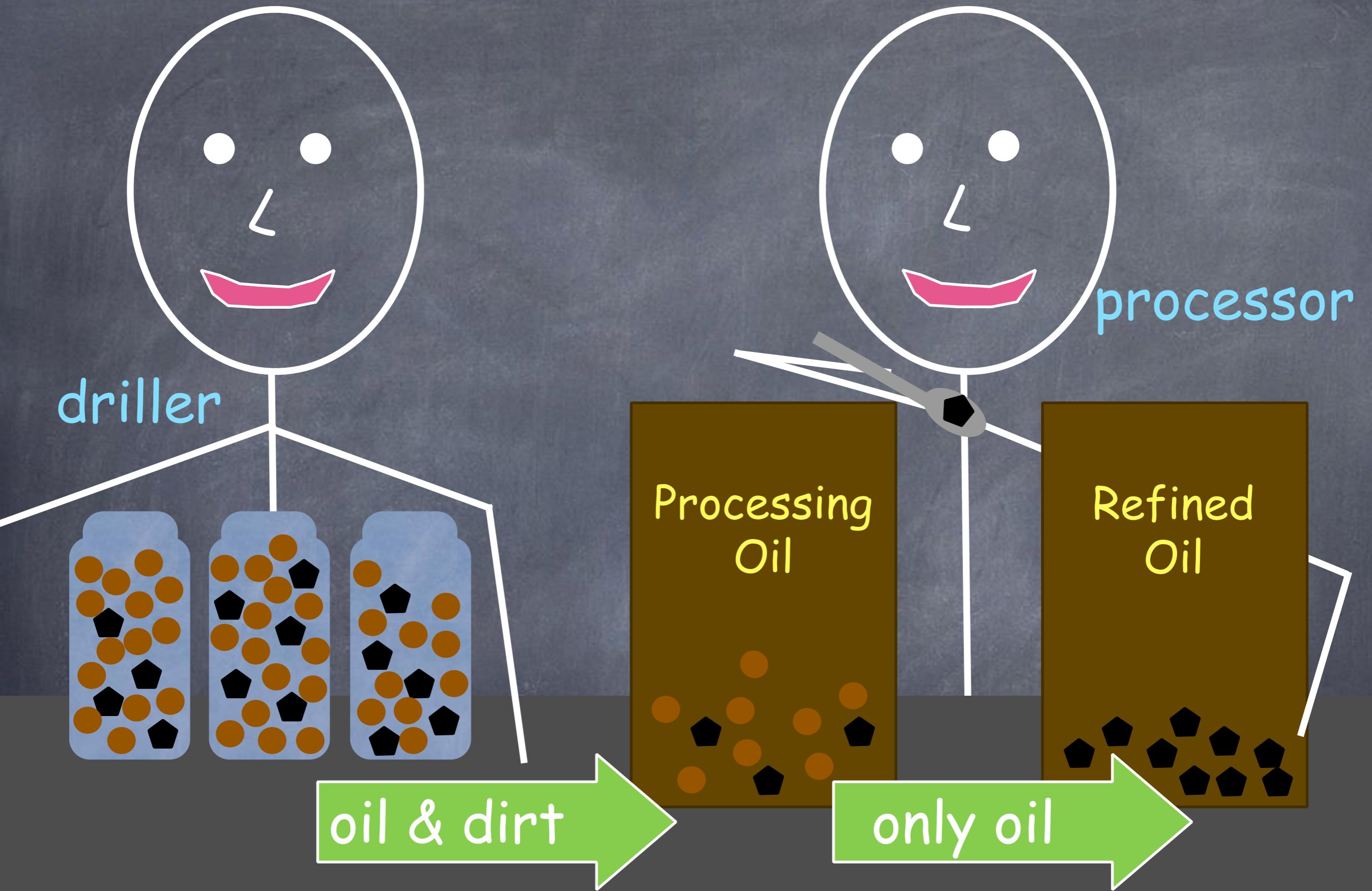
Processing Oil

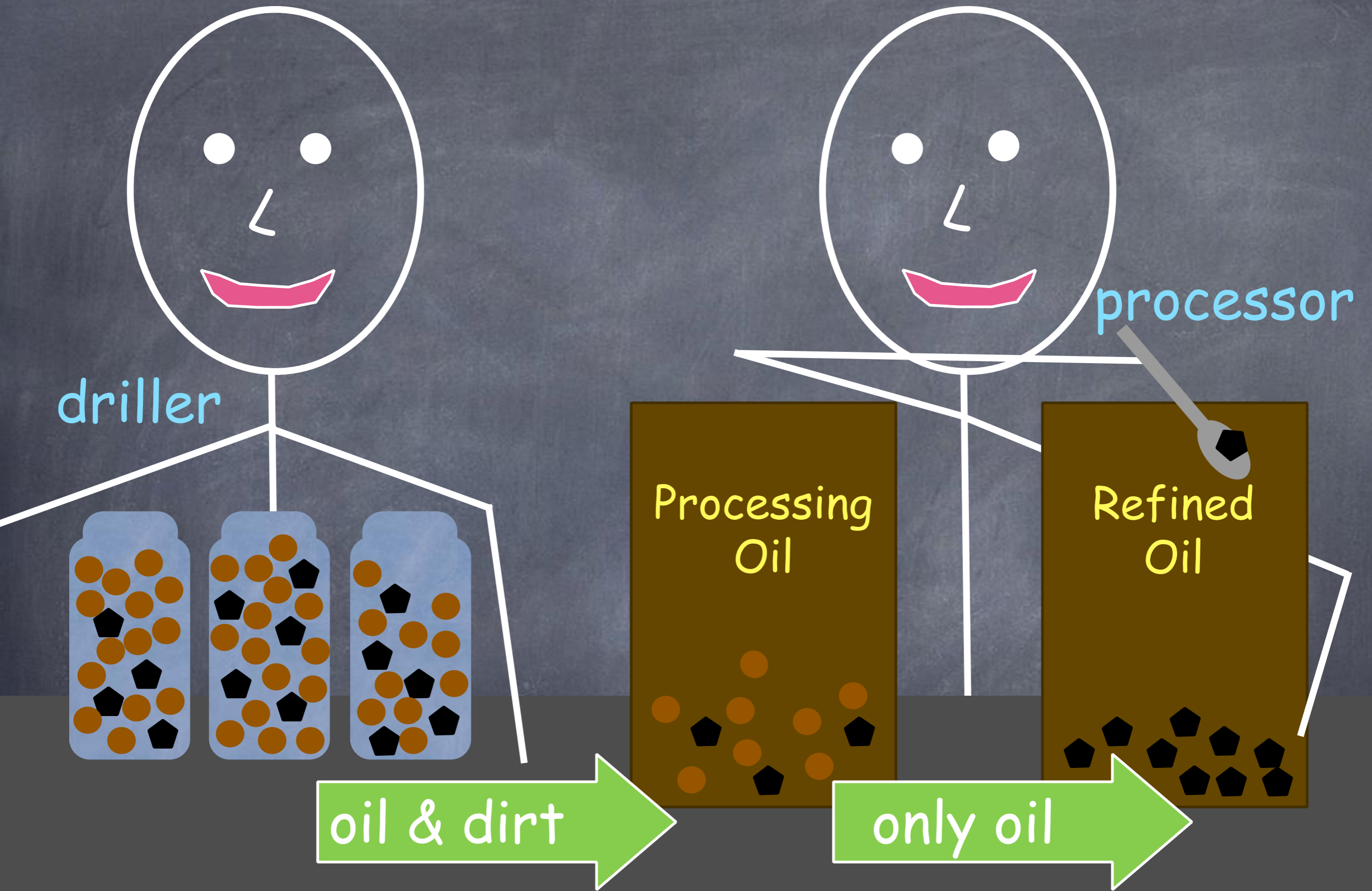
Refined Oil

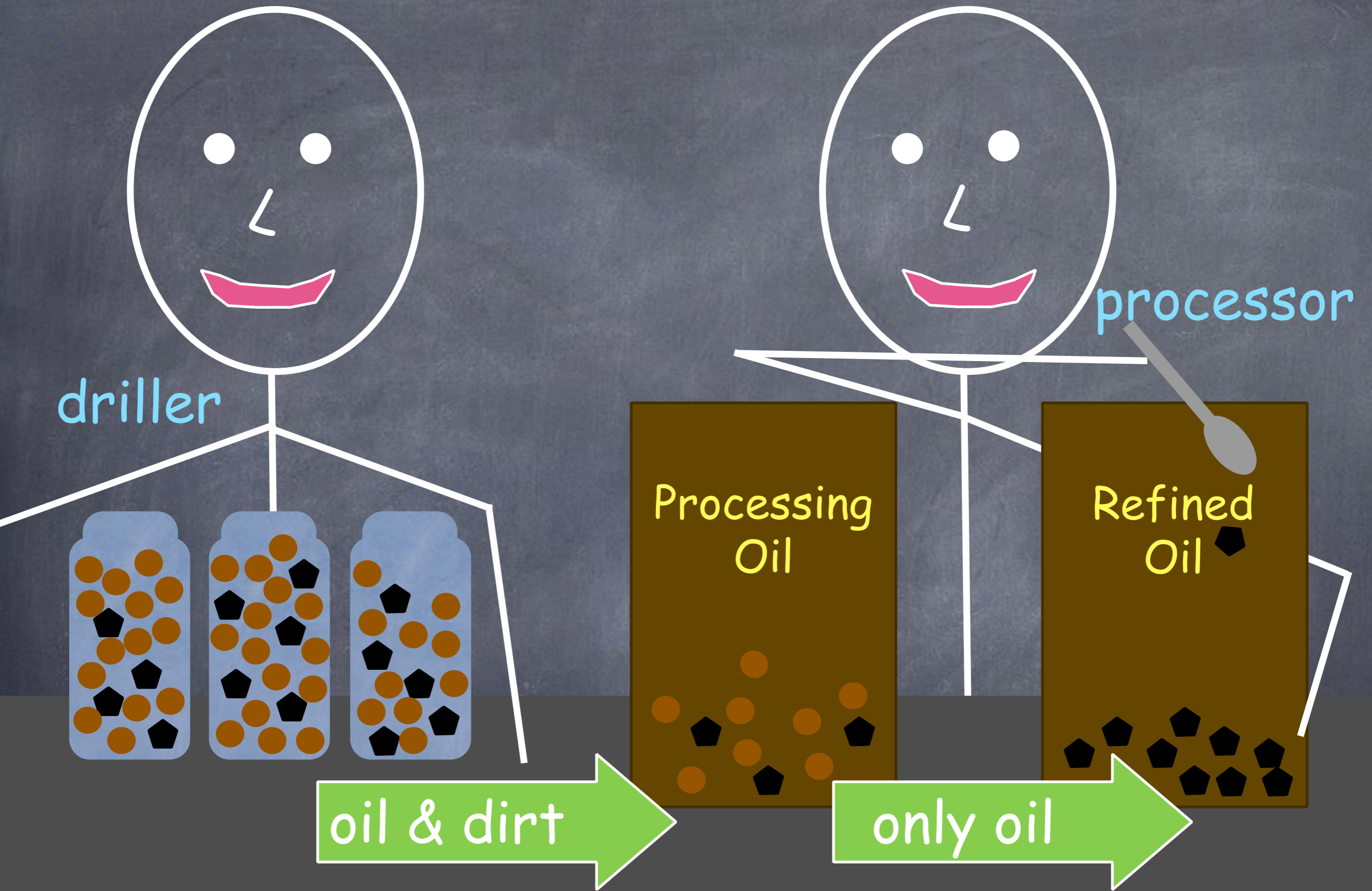
oil & dirt

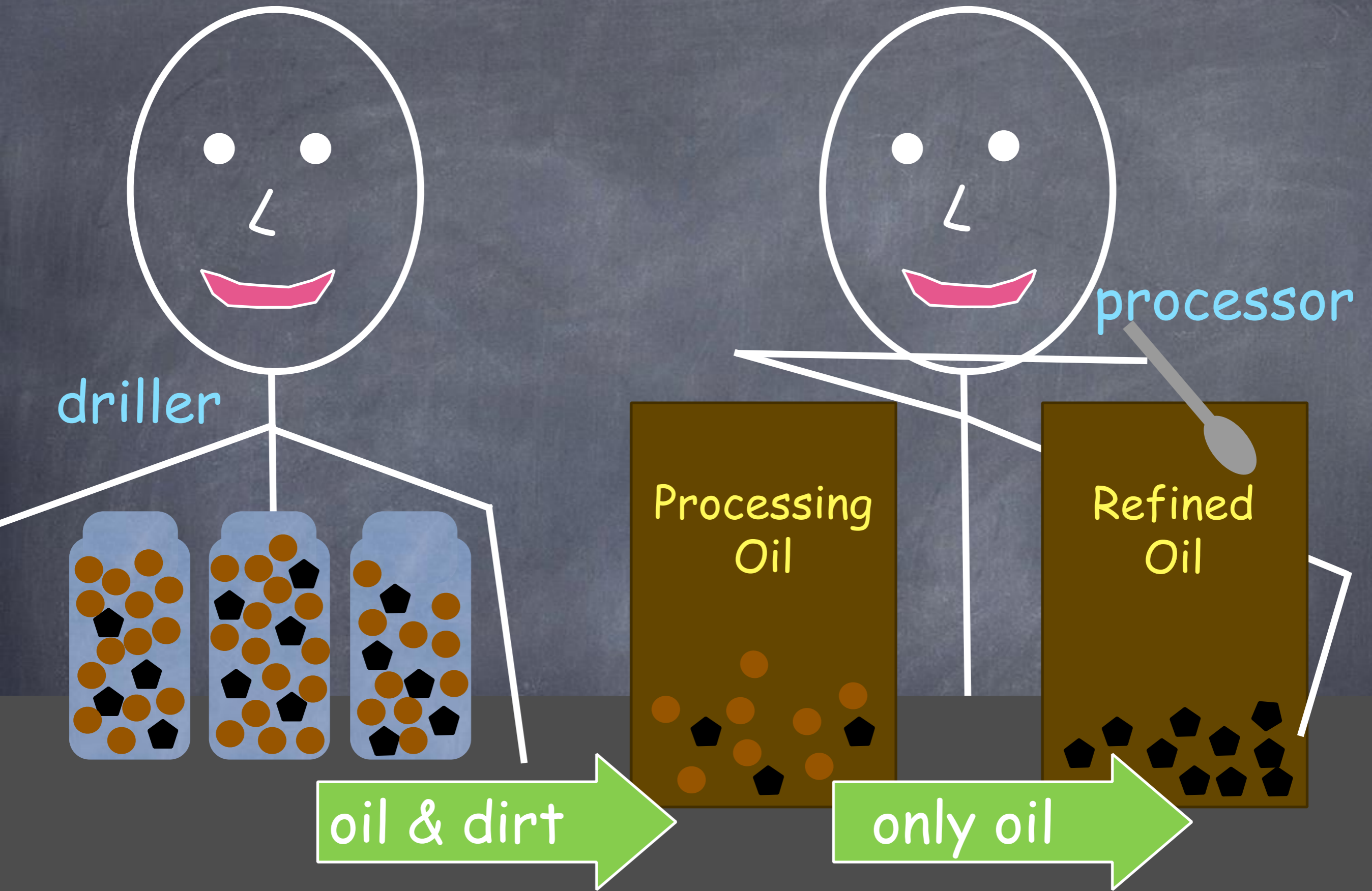
only oil













driller

processor

1 minute

1 year of work

oil & dirt

only oil

Processing Oil

Refined Oil

driller

processor

1 minute
1 year of work

Processing Oil

Refined Oil

oil & dirt

only oil

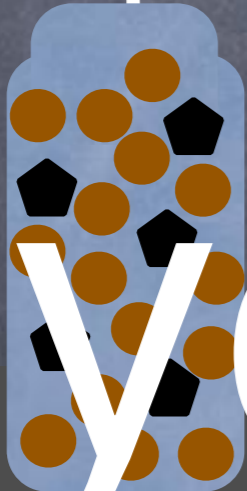
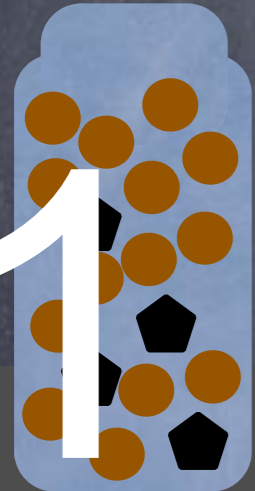


driller

processor

1 minute

1 year of work



driller

processor

1 minute

1 year of work

oil & dirt

only oil

Processing Oil

Refined Oil



driller

processor

1 minute

1 year of work

oil & dirt

only oil

Processing Oil

Refined Oil



driller

processor

1 minute

1 year of work

oil & dirt

only oil

Processing Oil

Refined Oil



driller

processor

1 year of work

1 minute

Processing Oil

Refined Oil

oil & dirt

only oil



driller

processor

1 year of work

oil & dirt

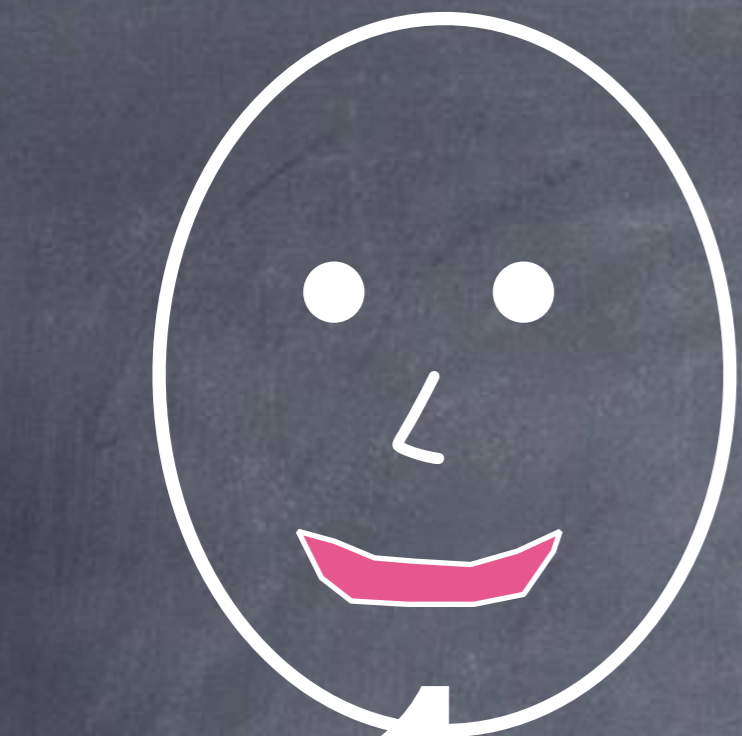
only oil

1 minute

Processing Oil

Refined Oil





driller



processor

1 minute



1 year of work



Processing Oil

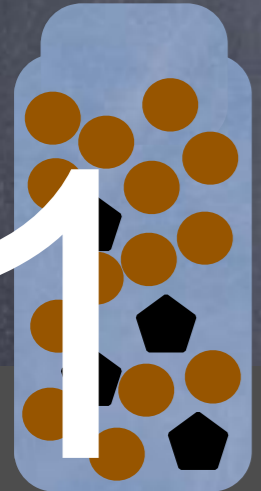
of work



Refined Oil



1 minute
1 year of work



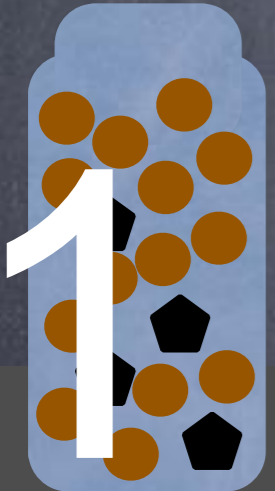


driller



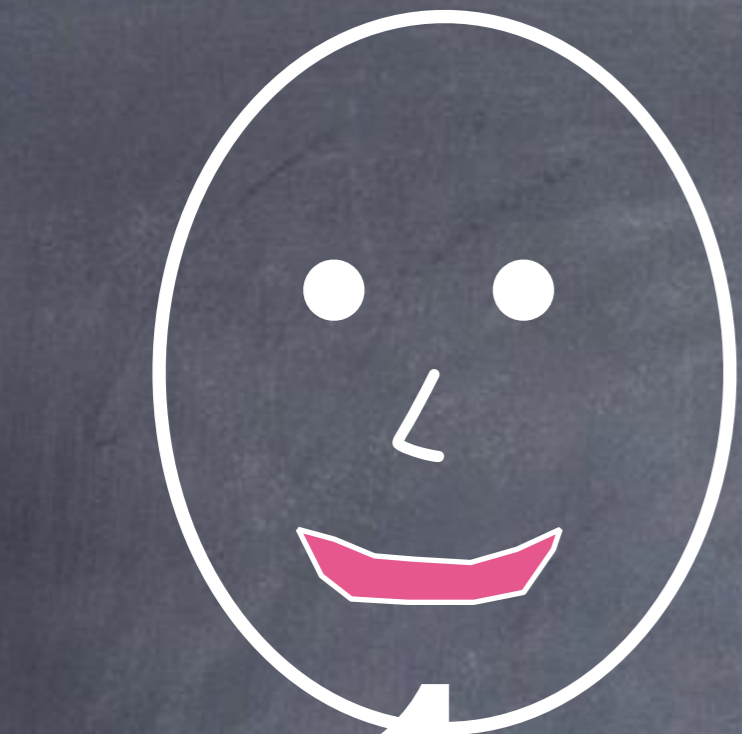
processor

1 minute

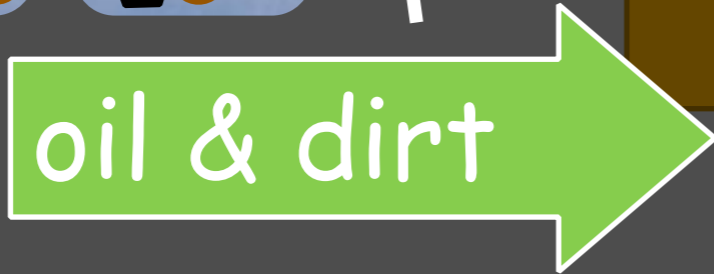
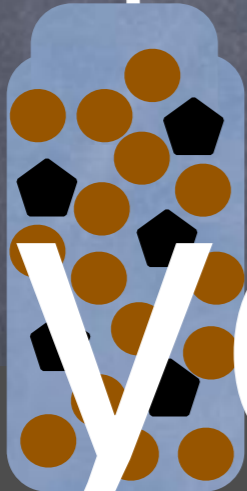
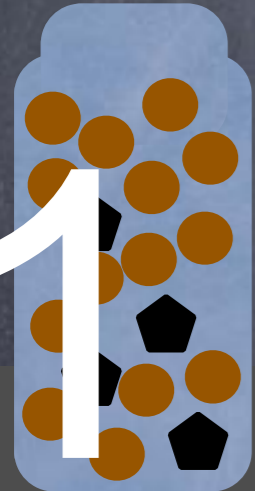


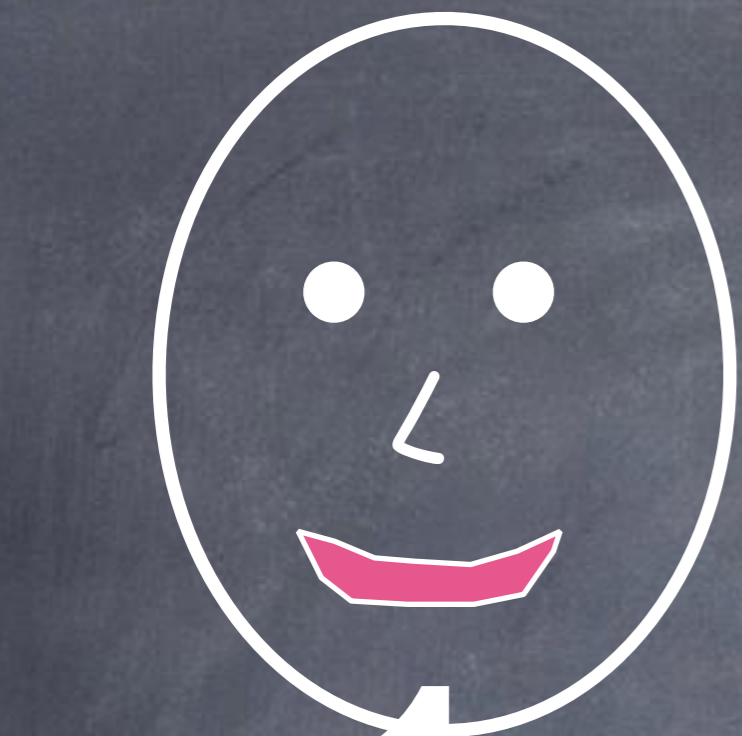
1 year of work



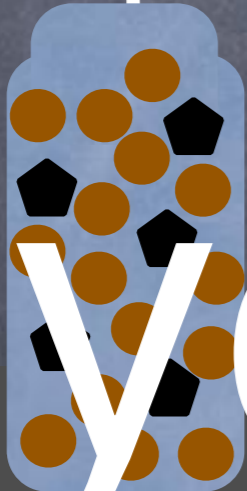
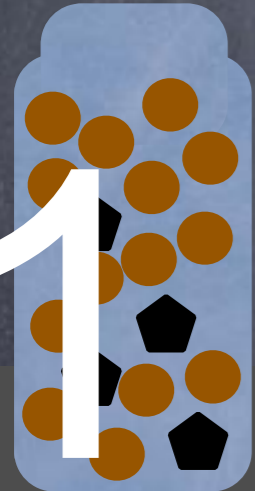


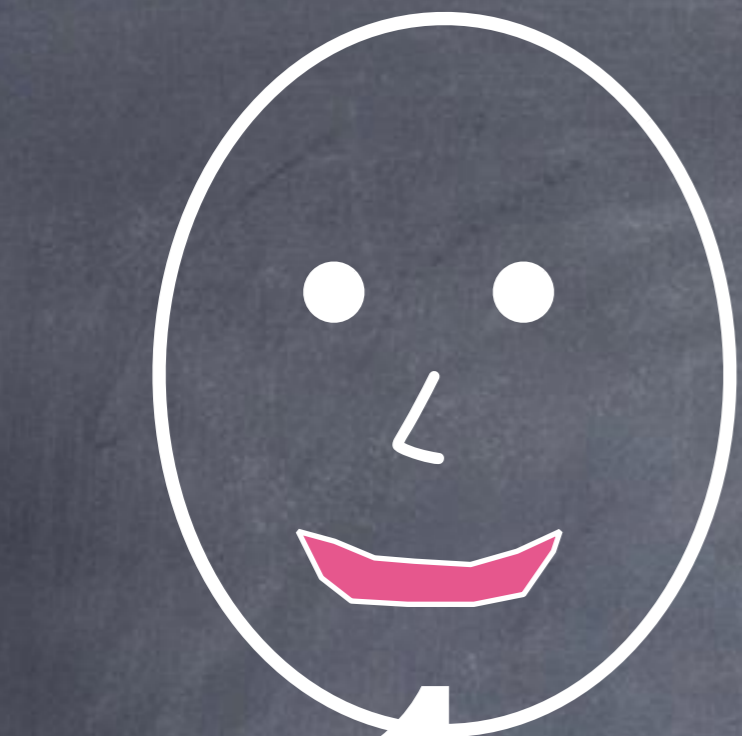
1 minute
1 year of work



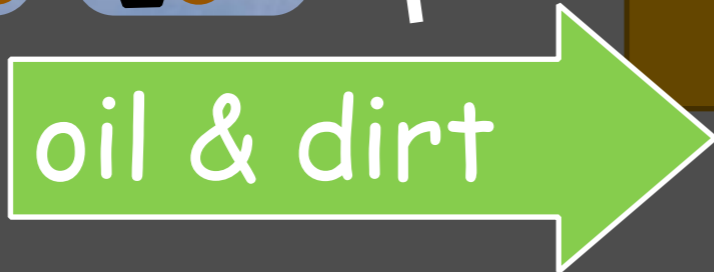
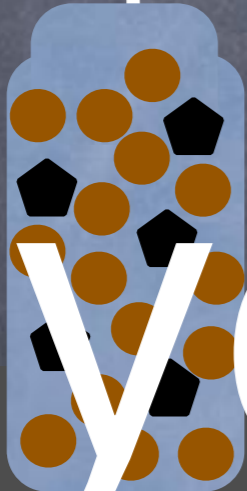
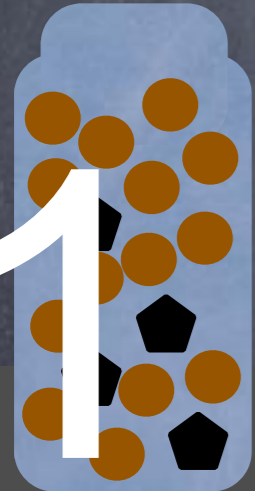


1 minute
1 year of work





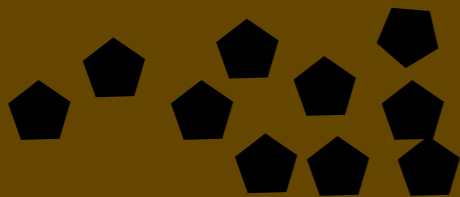
1 minute
1 year of work



STOP after 1 minute.

- After each year we will calculate the total production of processed oil at the weighing stations.
- Once weighed, the processed oil will be put in the accumulated oil bag.

Refined
Oil



Total
Accumulated
Oil

STOP after 1 minute.

- After each year we will calculate the total production of processed oil at the weighing stations.
- Once weighed, the processed oil will be put in the accumulated oil bag.



STOP after 1 minute.

- After each year we will calculate the total production of processed oil at the weighing stations.
- Once weighed, the processed oil will be put in the accumulated oil barrel.



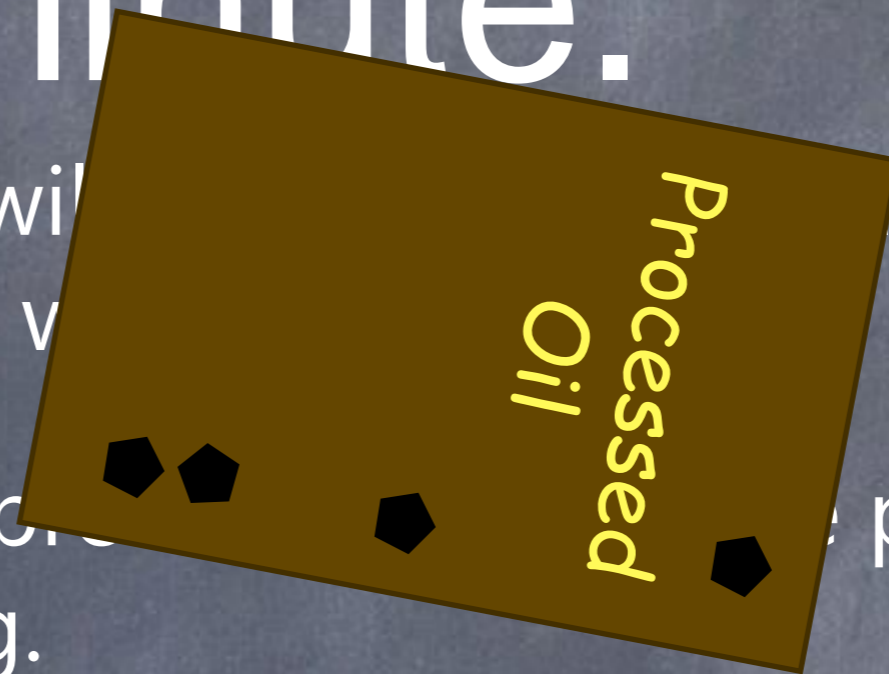
STOP after 1 minute.

- After each year we will weigh the production of processed oil at the well.
- Once weighed, the processed oil will be put in the accumulated oil bag.



STOP after 1 minute.

- After each year we will weigh the production of processed oil at the well.
- Once weighed, the production will be put in the accumulated oil bag.



STOP after 1 minute.

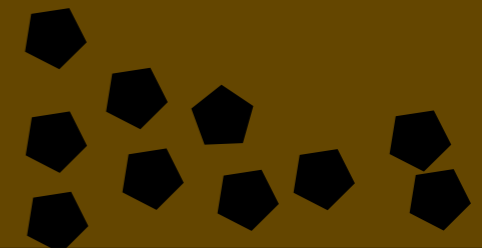
- After each year we will measure the production of processed oil at the well.
- Once weighed, the processed oil will be put in the accumulated oil bag.



STOP after 1 minute.

- After each year we will calculate the total production of processed oil at the weighing stations.
- Once weighed, the processed oil will be put in the accumulated oil bag.

Total
Accumulated
Oil



STOP after 1 minute.

- After each year we will calculate the total production of processed oil at the weighing stations.
- Once weighed, the processed oil will be put in the accumulated oil bag.

Record the weight on the bag --->
Record any removals of oil for purchases, penalties, etc. The final total will be weighed/added at the close of the game.



Penalties

- Any item spilled outside the container = 2 black beans from the processed oil will be removed
- Processed oil with contaminants = 2 black beans removed for each brown bean
- Immobile obstacles outside the container = 5 black beans removed from processed oil

Get ready for the next year.

- Spills and penalties get put in the communal waste bin.
- Anything in the processing oil gets dumped in the communal waste bin.

Jobs Between Years of Work


- Site inspector
- Processed oil inspector
- Weight station manager
- Pipeline 1
- Pipeline 2

Inspects the mining area for spilled oil and gives teams the okay to go to the weight stations

Jobs Between Years of Work

- Site inspector
- Processed oil inspector
- Weight station manager
- Pipeline 1
- Pipeline 2


Inspects the
processed oil bags
before they get
weighed!



Jobs Between Years of Work

- Site inspector
- Processed oil inspector
- Weight station manager
- Pipeline 1
- Pipeline 2

Works at the scales
to weigh processed
oil for teams



Jobs Between Years of Work

- Weight station manager
- Site inspector
- Processed oil inspector
- Pipeline 1
- Pipeline 2

Bring processed oil to weigh station and accumulated oil bag.

Drop processing oil in accumulated waste.

How to mine the oil?

- You may mine from any jar in any order.
- All jars must remain on the table and upright at all times. They may not move from their spots.
- Puzzle pieces and bouncy balls must remain in the jars.
- Oil and dirt can only be touched by the tools provided. No hands!
- Oil and dirt can be taken out and dumped to the processing oil bag. Then only oil can be separated and put in refined oil bag.
- Oil must enter the processing bag before going to the

Penalties

- Any item spilled outside the container = 2 black beans from the processed oil will be removed
- Processed oil with contaminates = 2 black beans removed for each brown bean
- Immobile obstacles outside the container = 5 black beans removed from processed oil