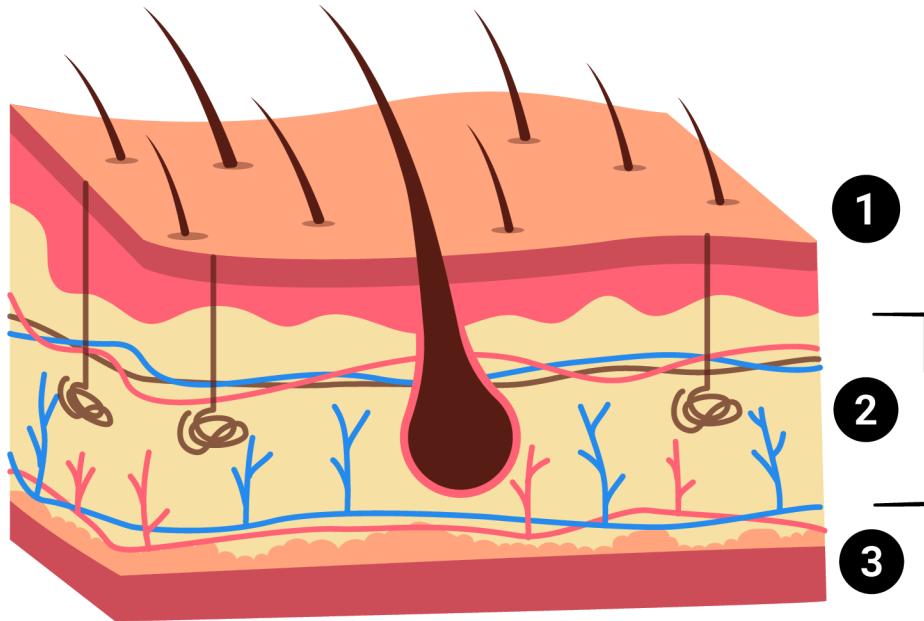


Skin Layers

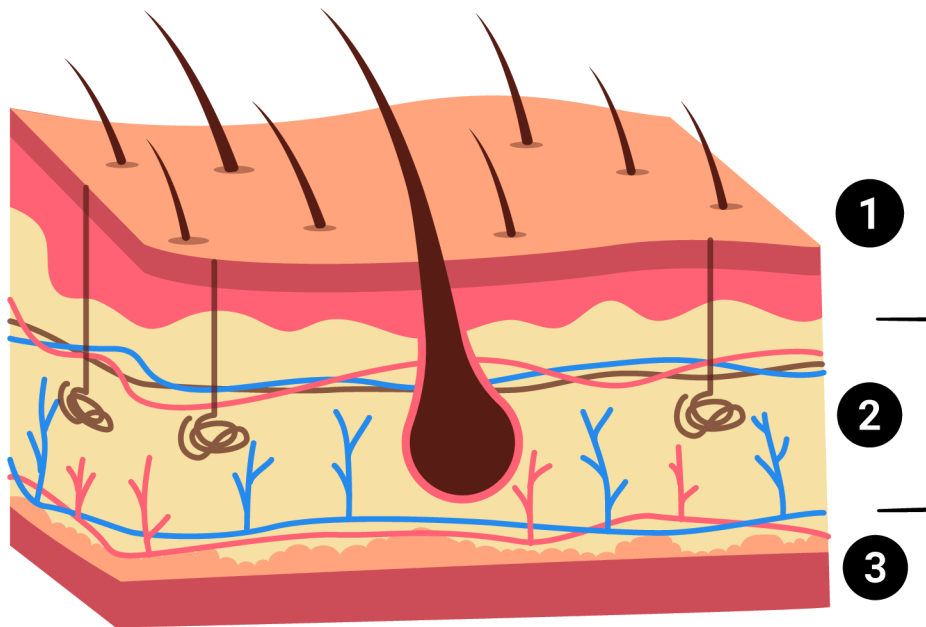


Three layers of the skin:

- 1.
- 2.
- 3.

Display during Lesson 1 while discussing how skin protects the body and what happens when it is cut.

Skin Layers



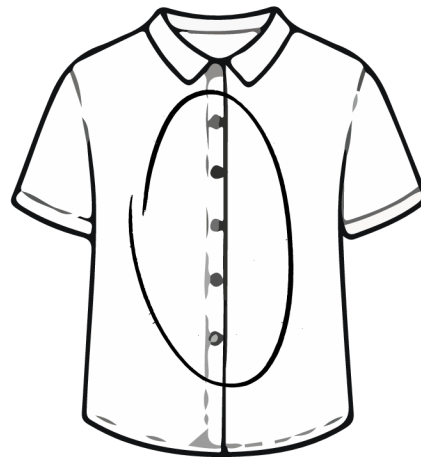
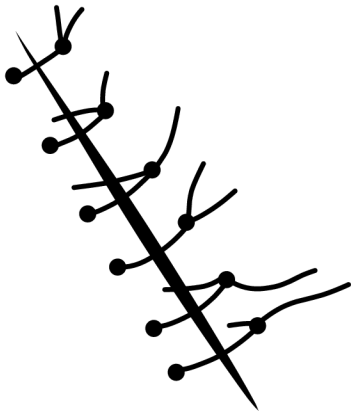
Three layers of the skin:

1. **Epidermis** (top)
2. **Dermis**
3. **Hypodermis** (lower or under)

Display during Lesson 1 while discussing how skin protects the body and what happens when it is cut.

Artful Suturing

INTERRUPTED



Action

Each stitch is placed individually and tied off with a simple **square knot**.

Everyday Connection

Think of it like a series of individual buttons holding a shirt closed.

What happens if one button pops?

Why it matters

It allows for precise control over the **tension** of each section of the wound.

Display as students begin placing their first stitches on the cardstock wound model.

Tying a Square Knot

A square knot is the most frequently used knot when placing sutures. It is the most secure knot and is least likely to unravel.

First Throw

Right over left

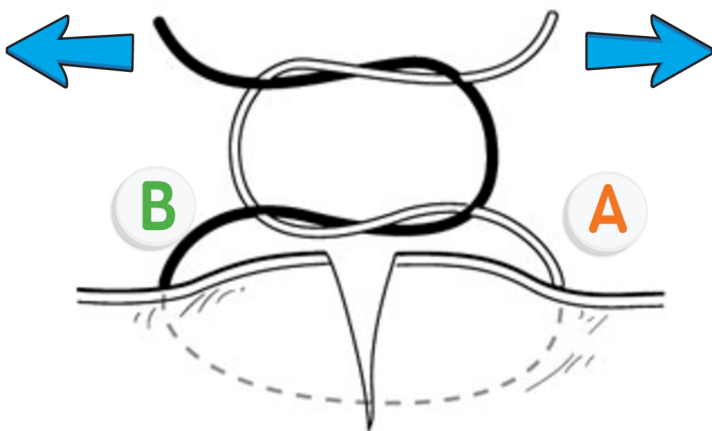
Take **End A** (the right cord) and place it over and then under **End B** (the left yarn). Pull both ends gently to tighten this first loop against the "wound."

Second Throw

Left over Right

Take the **new left cord** (which was *formerly End A*) and place it over and then under the **new right cord**. Pull both ends gently to snug this second loop down onto the first one.

Cinching the Knot

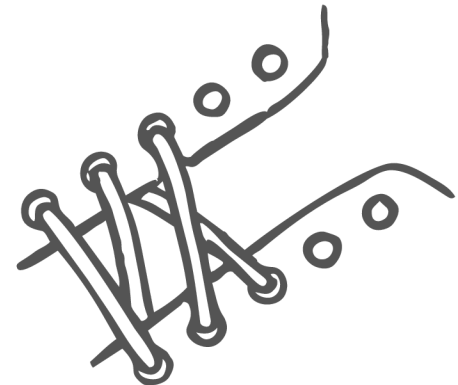
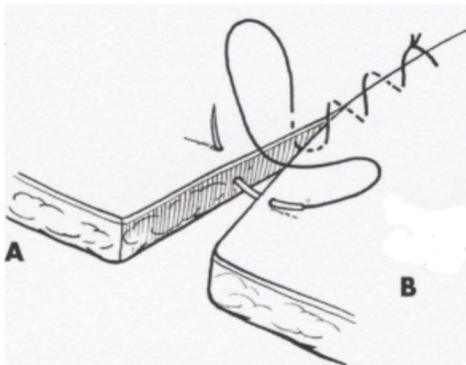


Even horizontal tension must be maintained between the two suture ends while the knot is being tightened,

Display while modelling how to tie and snug a secure knot for each interrupted stitch.

Artful Suturing

CONTINUOUS



Action

The thread is started with a knot, and then a series of stitches are placed without cutting the thread until the very end, where a final knot secures the line.

Everyday Connection

Think of it like lacing a shoe or sewing along a line without stopping after every stitch.

Why it matters

Faster to place and provides an excellent seal.

Display briefly as an extension, after students have completed a short series of interrupted stitches.